

How to...

Use Hierarchy Variables and Hierarchy Node Variables within a Query

BUSINESS INFORMATION WAREHOUSE



ASAP “How to...” Paper



Applicable Releases: BW 2.0B, 2.1C

June 2001

SAP (SAP America, Inc. and SAP AG) assumes no responsibility for errors or omissions in these materials.

These materials are provided “as is” without a warranty of any kind, either express or implied, including but not limited to, the implied warranties of merchantability, fitness for a particular purpose, or non-infringement.

SAP shall not be liable for damages of any kind including without limitation direct, special, indirect, or consequential damages that may result from the use of these materials.

SAP does not warrant the accuracy or completeness of the information, text, graphics, links or other items contained within these materials. SAP has no control over the information that you may access through the use of hot links contained in these materials and does not endorse your use of third party web pages nor provide any warranty whatsoever relating to third party web pages.

1 Business Scenario

As a business user of the Business Information Warehouse at query execution time, you want to have the flexibility to select both dynamically, the hierarchy as well as a specific hierarchy node of that query.

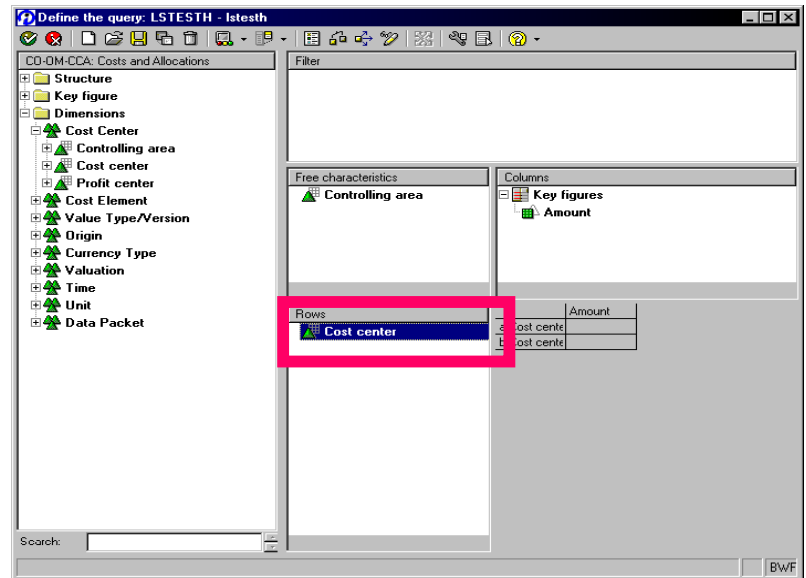
In this example, we will use hierarchies for the infoobject 0COSTCENTER.

2 The Result

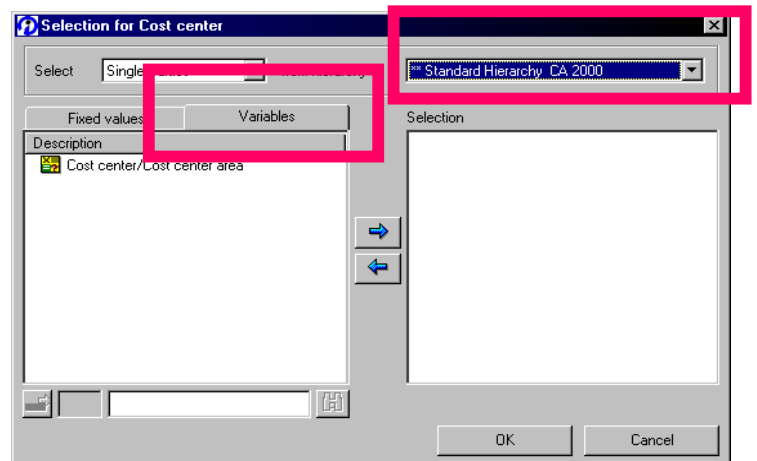
The solution described below can be achieved with very little effort. As a prerequisite, it is assumed that you already have defined variables for hierarchies, as well as variables for hierarchy nodes, in the system. Refer to the online documentation, if you do not know how to define BEx variables.

3 The Step By Step Solution

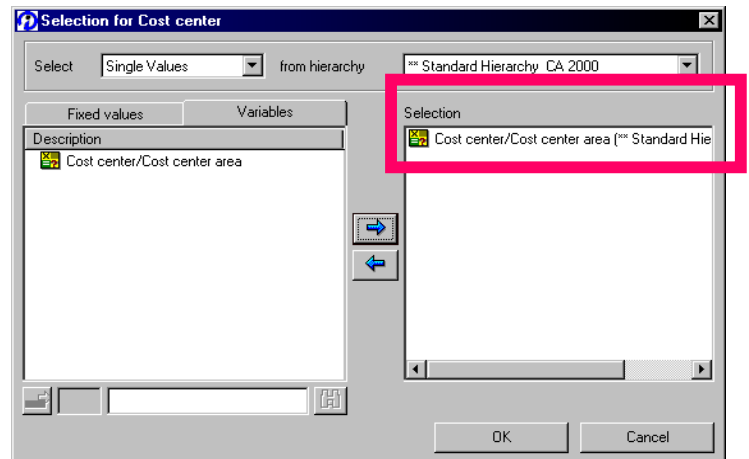
1. Create a new query in BEX.
Drag&Drop 0COSTCENTER into the query definition area.



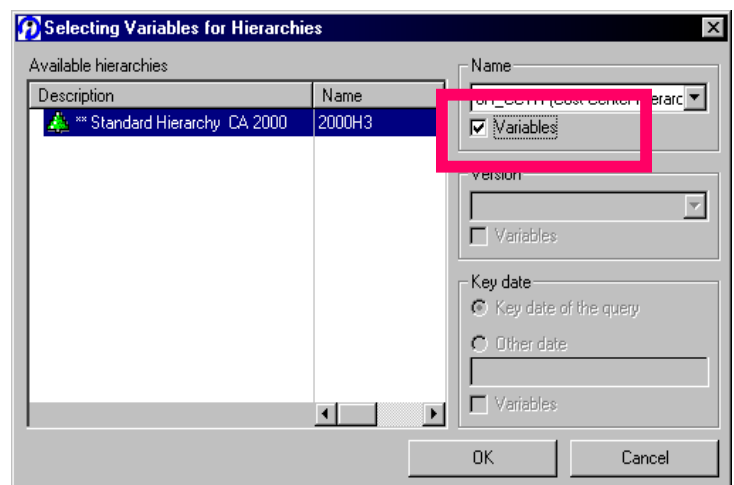
2. In the Query definition, choose "Restrict" from the context menu for cost center. The selection tool shows up. Select a (representative) fix hierarchy from the top right dropdown box. The first level of nodes will be displayed on the left side in the "Values" tab. Click on the "Variables" tab. Hierarchy node variables will be displayed.



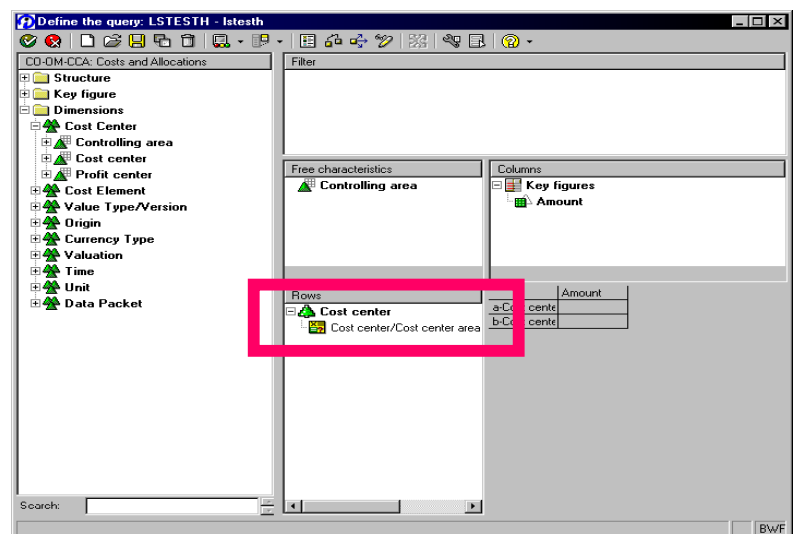
3. Select a node variable.



4. Right click on the selected node variable on the right side and select "Variable hierarchy" from the context menu. The hierarchy selection tool shows up. Select a variable hierarchy here.



5. Save and execute the query.



6. At query execution time, now you will be asked for both, the hierarchy and the hierarchy node.

