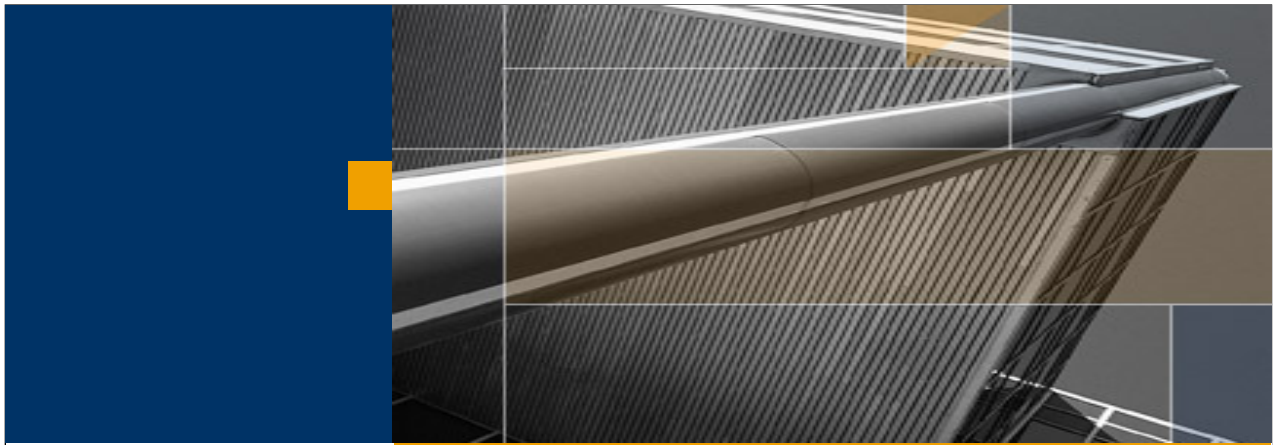




Version I

Architecture & Technology Data Warehousing Workbench

THE BEST-RUN BUSINESSES RUN SAP 



Overview

Basics

Personalization and Favorites

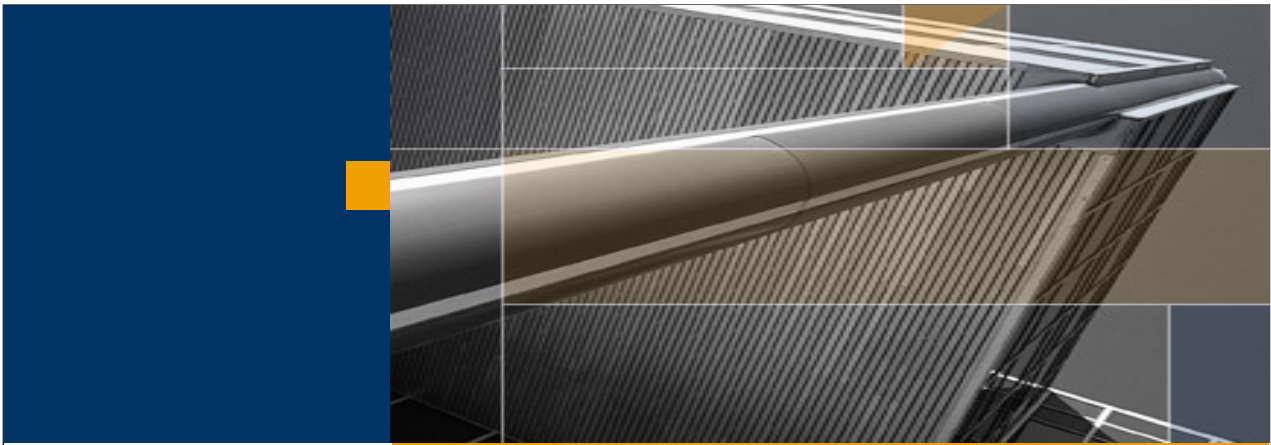
Dataflow Expansion

Navigation

Search Capabilities

THE BEST-RUN BUSINESSES RUN SAP





Overview

Basics

Personalization and Favorites

Dataflow Expansion

Navigation

Search Capabilities

THE BEST-RUN BUSINESSES RUN SAP



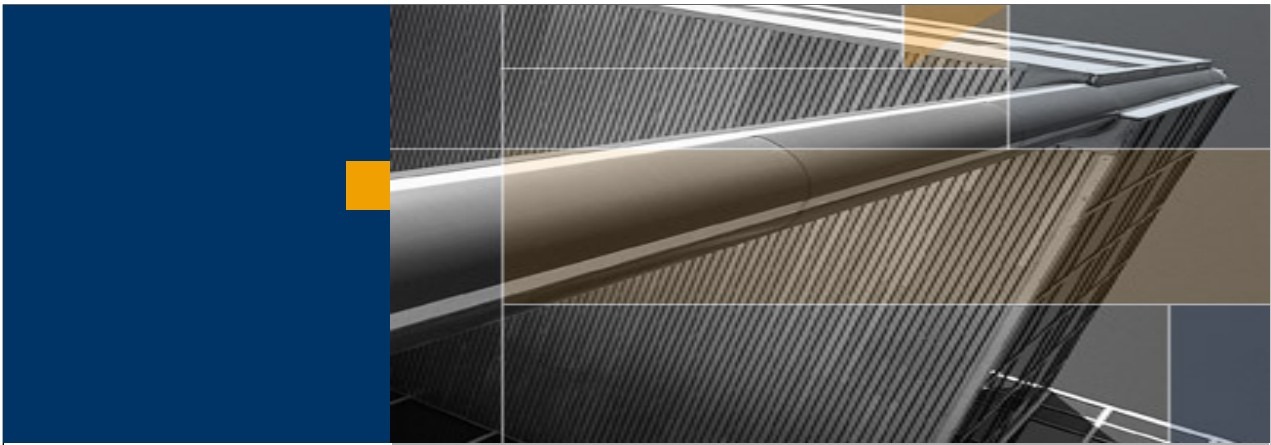
Data Warehousing Workbench with SAP NetWeaver 2004s

■ Changes and Enhancements

- ◆ New object navigation: object tree on left side, application UI integrated on right side
- ◆ Dataflow expansion in all trees
- ◆ Browser-like navigation within object history
- ◆ Favorites for user-individual BI objects
- ◆ Personalized view settings
- ◆ Enhanced Search capabilities

■ Obsolete Features

- ◆ InfoPackage group – replaced by Process Chains
- ◆ Event Chains – replaced by Process Chains
- ◆ PSA tree → PSA directly accessible from DataSource
- ◆ Reporting Agent – functionality moved to Information Broadcasting (see scenario 'Enterprise Query, Reporting and Analysis')
- ◆ Note: Old Admin Workbench still available via transaction RSA1OLD



Overview

Basics

Personalization and Favorites

Dataflow Expansion

Navigation

Search Capabilities

THE BEST-RUN BUSINESSES RUN SAP



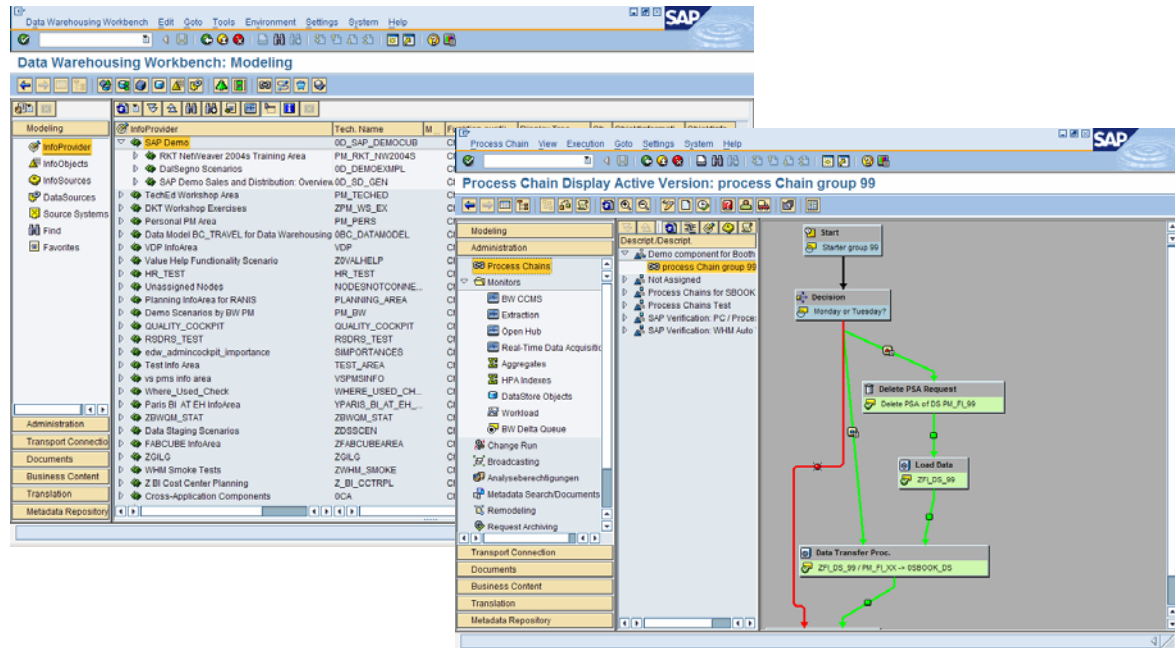
Terminology Changes

- **Data Warehousing Workbench**
 - ◆ Enhancement of former Administrator Workbench
- **DataStore Object**
 - ◆ Former ODS Object
- **DataStore Object for direct update**
 - ◆ Former transactional ODS object
- **Real-time InfoCube**
 - ◆ Former transactional InfoCube
- **VirtualProvider**
 - ◆ InfoProviders without physical data storage (e.g. former RemoteCubes etc.)
- **Further Information**
 - ◆ SAP Service Marketplace alias /bi → Documentation → Changed Terminology for SAP NetWeaver 2004s BI

Overview – 1 –

Data Warehousing Workbench with SAP NetWeaver 2004s

■ Modeling and Administration view



Coexistence of two technologies

- In addition to new SAP NetWeaver 2004s technology, the SAP BW 3.x objects are still available and supported
 - ◆ InfoSource
 - ◆ DataSource
 - ◆ Transformation / Update Rules
 - ◆ etc.
- SAP BW 3.x objects are marked with a small square

SAP BW 3.x
InfoSource

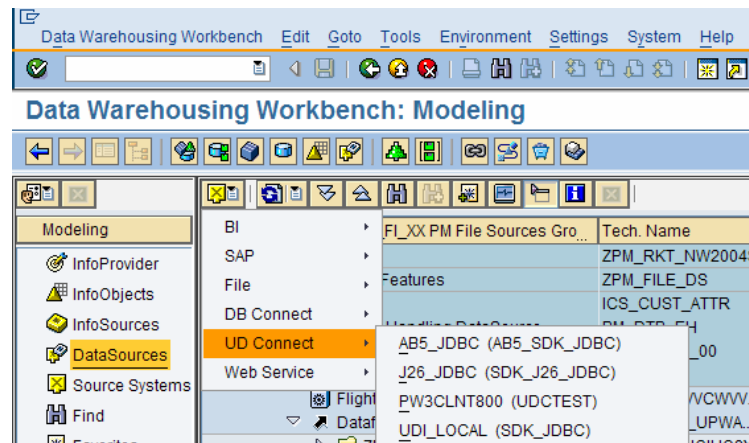
InfoSource Sales Details	PM_IS_SLDET	Change	InfoSources
SAP Demo: DalSegno Company Lost Deals	0D_DEMOEXMPL_2	Change	InfoSources
G/L Account	0GL_ACCOUNT	Change	InfoObjects
Organizational Unit	ORGUNIT	Change	InfoObjects
load 2005 2006	PM_SD_C03_LOAD ..	Change	DataSources
Materials group texts (SAP DEMO)	0D_MTLGROUP_TE...	Change	DataSources

SAP BW 3.x
DataSource

DataSource Tree

DataSource Tree

- Replaces PSA tree
- PSA maintenance is integrated in DataSource tree
 - ◆ Via context menu → Manage or
 - ◆ Via DataSource Maintenance → PSA
- DataSource tree for particular source system





Overview

Basics

Personalization and Favorites

Dataflow Expansion

Navigation

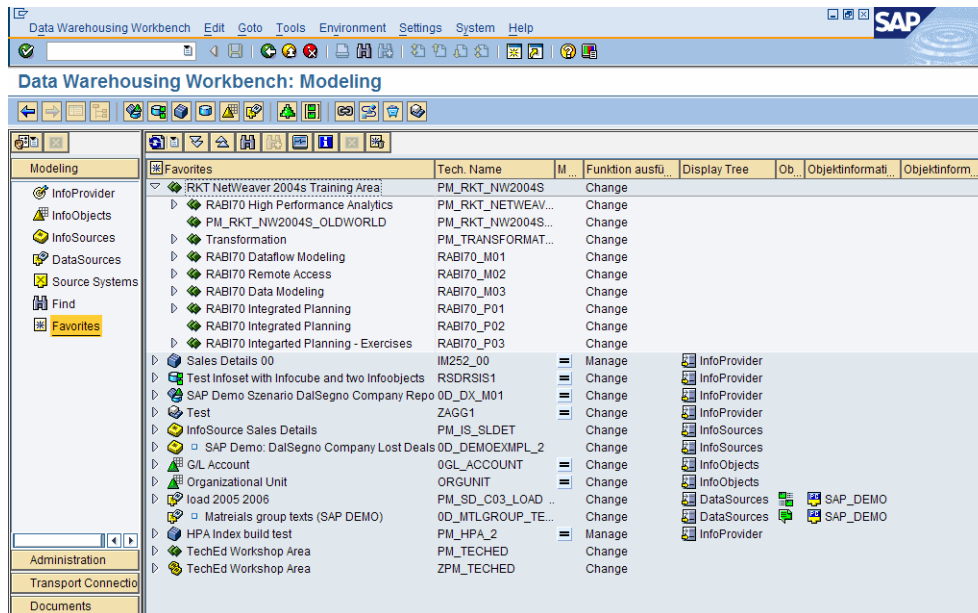
Search Capabilities

THE BEST-RUN BUSINESSES RUN SAP



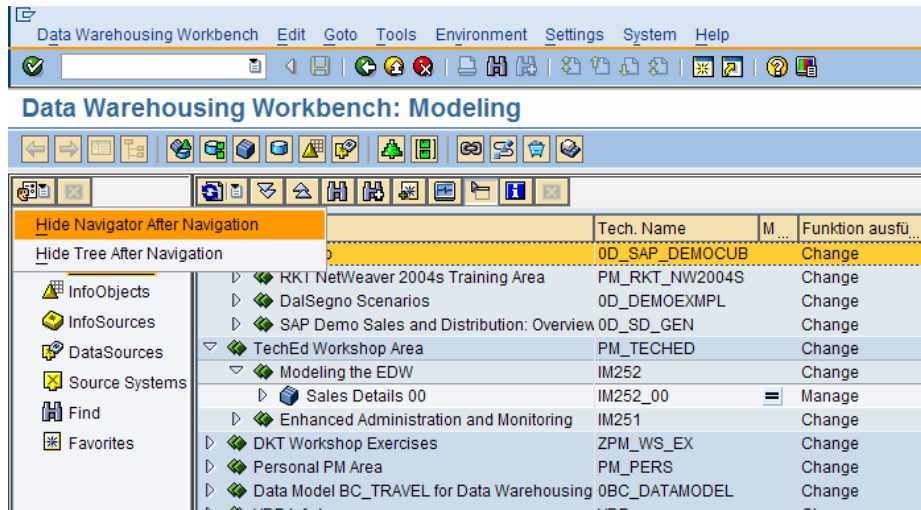
Favorites

- Any kind of object (including application areas) can be included
- Via Drag & Drop or via button 'Add to Favorites'



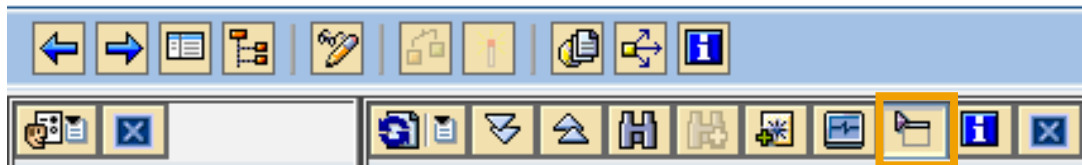
Personalization

- Hide navigation panes after navigation (simulate SAP BW 3.x navigation)

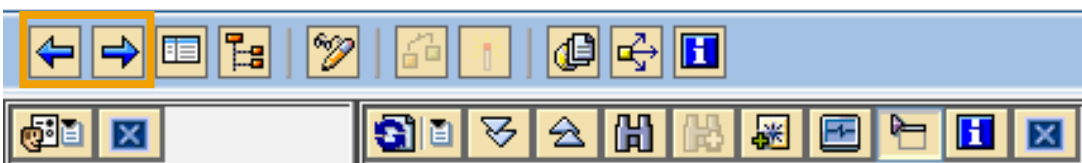


Additional features

- Last Navigation step is stored and will be used as initial view for next login
- Hide empty tree folders



- Browser-like navigation

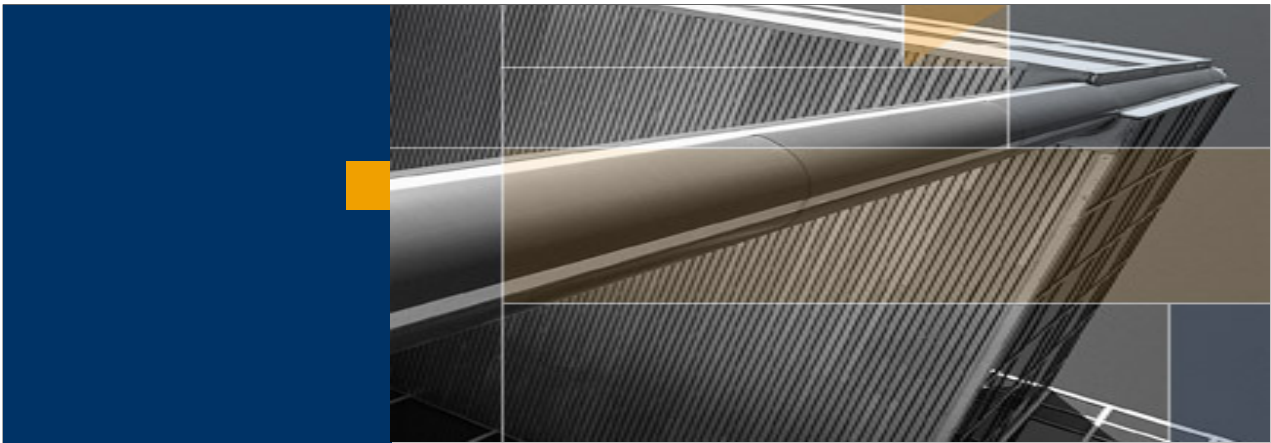


- Show/Hide Navigator and Tree display



- Navigation to initial view via





Overview

Basics

Personalization and Favorites

Dataflow Expansion

Navigation

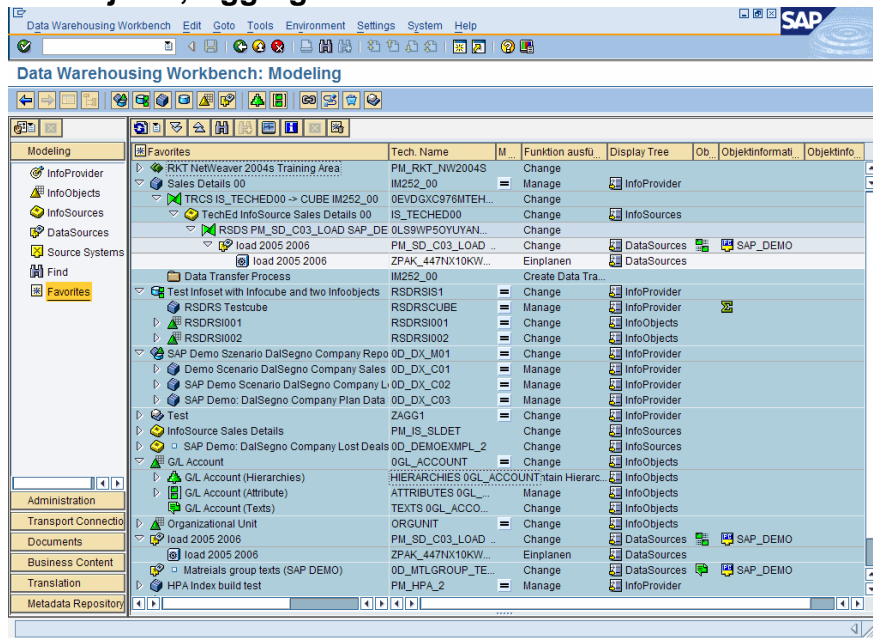
Search Capabilities

THE BEST-RUN BUSINESSES RUN SAP



Data Flow Expansion

- From object to the source (e.g. InfoPackage, DTP) in one view
- Also features components of MultiProviders, InfoSets, InfoObjects, Aggregation Levels etc.



Data Flow Expansion – 2 –


DataSource tree

■ Data flow upwards (up to InfoProvider)

The screenshot shows the SAP Data Warehousing Workbench: Modeling interface. The left sidebar contains a navigation tree with the following items: Modeling, InfoProvider, InfoObjects, InfoSources, DataSources (highlighted), Source Systems, Find, and Favorites. The main area displays a table of DataSources for the PM_FI_XX PM File Sources Group. The table has columns for Tech. Name, M, Funktion ausfü..., Display Tree, Ob..., Objektinformati..., and Objektinform....

Tech. Name	M	Funktion ausfü...	Display Tree	Ob...	Objektinformati...	Objektinform...
RKT Workshops		Change				
File Interface Features		Change				
blah		Change				
DTP Error Handling DataSource		Change				
PM File DataSource RAB170		Change				
Flight Data File Group XX		Change				
Flight Data for Group XX		Einplanen				
Dataflow Upwards		Change				
ZFL_DS_00 / PM_FI_XX -> BKDSI DTP_60PGJGIU09Y...		Change				
RSDS ZFL_DS_00 PM_FI_XX -> (0881977D8KEI5VK...		Change				
DataStore Object Group XX		Manage				
ZFL_DS_X1		Change				

At the bottom of the interface, there is a status bar showing the current project path: RKO (1) 003 | iwdt9418 | INS.



THE BEST-RUN BUSINESSES RUN SAP



Basic Navigation

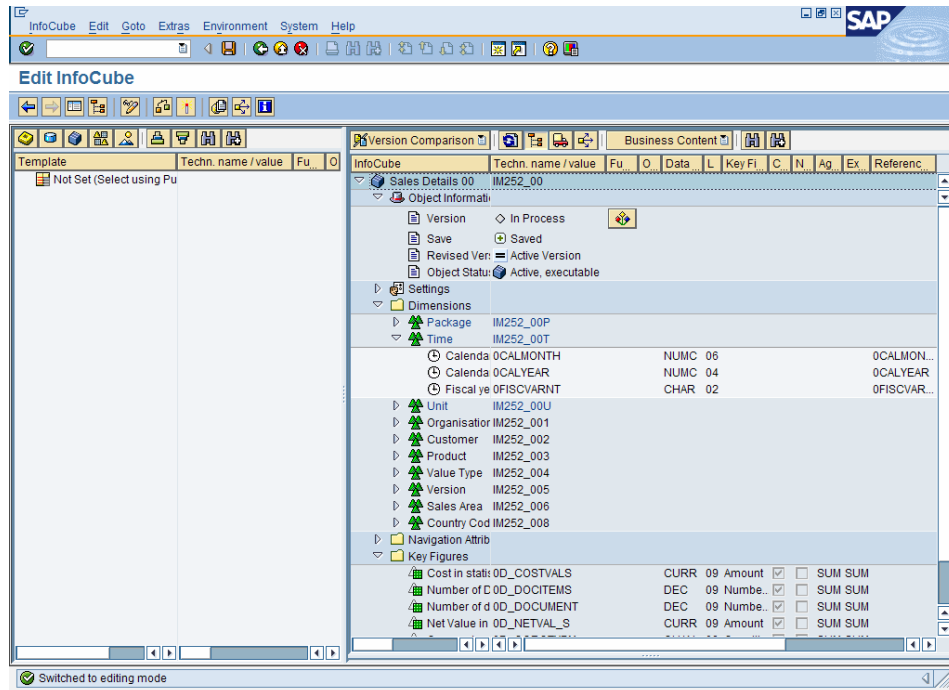
Jump to corresponding tree

Functions directly available

InfoProvider	Tech. Name	M...	Funktion ausfu...	Display Tree	Ob...	Objektinformati...	Objektinfo...
SAP Demo	0D_SAP_DEMOCUB		Change				
RKT NetWeaver 2004s Training Area	PM_RKT_NW2004S		Change				
RABI70 High Performance Analytics	PM_RKT_NETWEAV...		Change				
RABI70 Dataflow Modeling	RABI70_M01		Change				
RABI70 Remote Access	RABI70_M02		Change				
RABI70 Integrated Planning	RABI70_P01		Change				
RABI70 Data Modeling	RABI70_M03		Change				
PM RKT RKL Sales Demo: Overview	PM_RKL4		Manage				
Sales Details	PM_SDDDET		Manage				
Customer number (sales view)	0CUST_SALES		Manage				
InfoSet Join	PM_AP1		Change				
PM RKT RKL InfoSet 1	PM_RKL2		Change				
PM RKT RKL DataStore 1	PM_RKL1		Manage				
Sales Order and Amount (Write-Opt.)	PM_RKL5		Manage				
Sales Order and Amount (Direct Upc)	PM_RKL6		Manage				
Transformation	PM_TRANSFORMAT...		Change				
RABI70 Integrated Planning - Exercises	RABI70_P03		Change				
DalSegno Scenarios	0D_DEMOEXMPL		Change				
Planning Scenario DALSEGNO_2	DALSEGNO_2		Change				
Test	ZAGG1		Change				
Demo Scenario DalSegno Company Sa	0D_DX_C01		Manage				
SAP Demo Scenario DalSegno Compar	0D_DX_C02		Manage				
SAP Demo: DalSegno Company Plan D	0D_DX_C03		Manage				
SAP Demo Szenario DalSegno Compar	0D_DX_M01		Change				
SAP Demo Szenario DalSegno Compar	DALSEGNO		Change				
SAP Demo Sales and Distribution: Overview	0D_SD_GEN		Change				
TechEd Workshop Area	PM_TECHED		Change				
Modeling the EDW	IM252		Change				

InfoCube

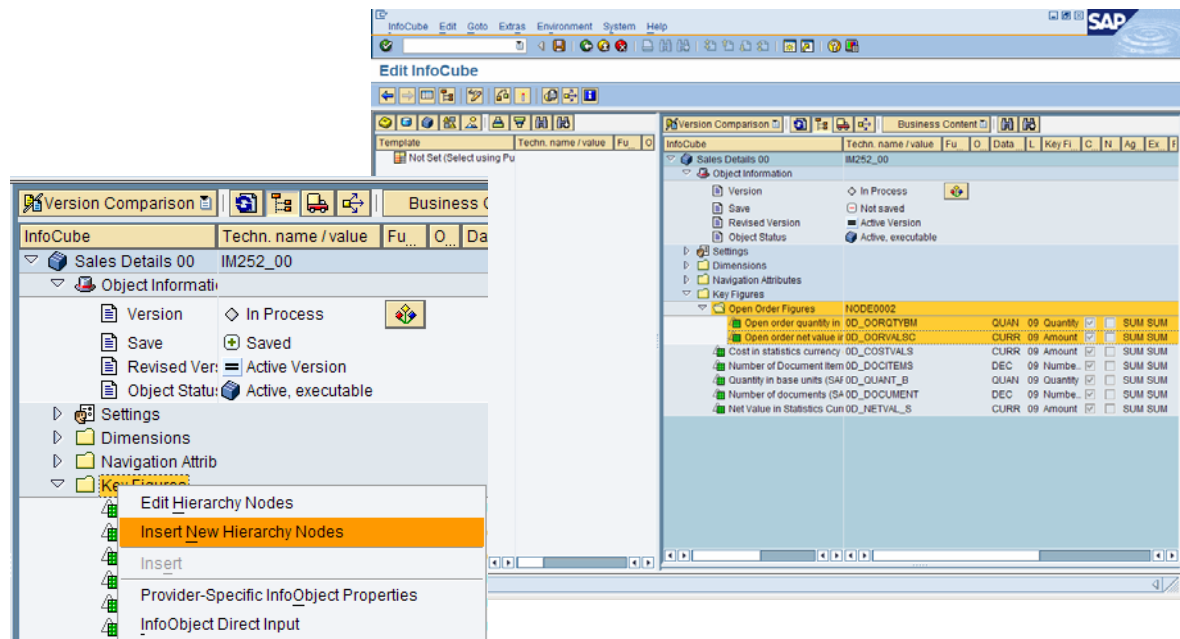
■ 'DataStore-like' Maintenance



InfoCube Maintenance – 2 –

Key Figure Hierarchies within InfoCubes and DataStore Objects

- Can also be used in Query Design





Overview

Basics

Personalization and Favorites

Dataflow Expansion

Navigation

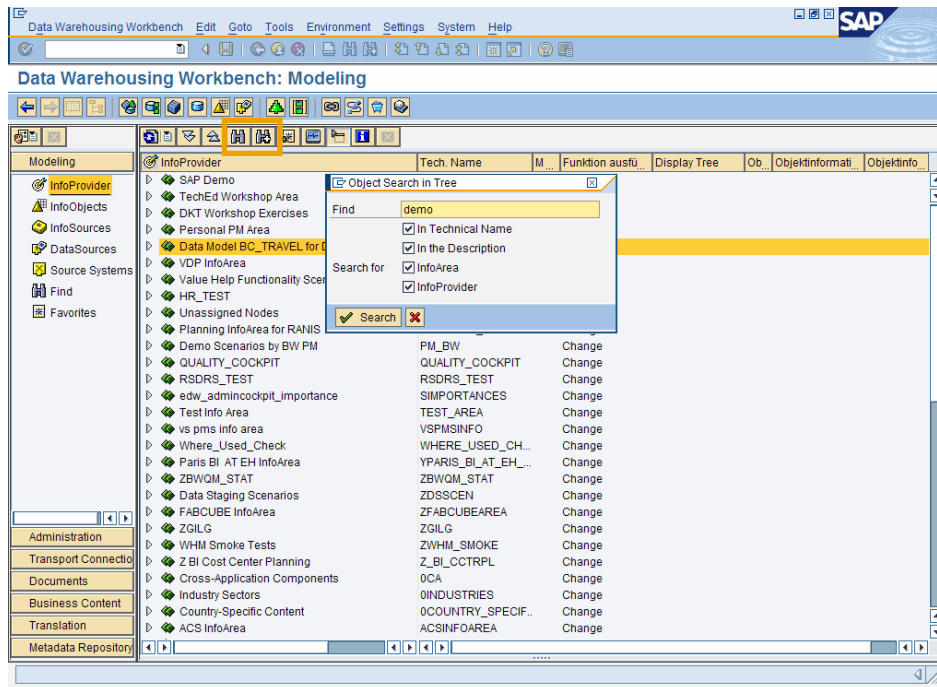
Search Capabilities

THE BEST-RUN BUSINESSES RUN SAP



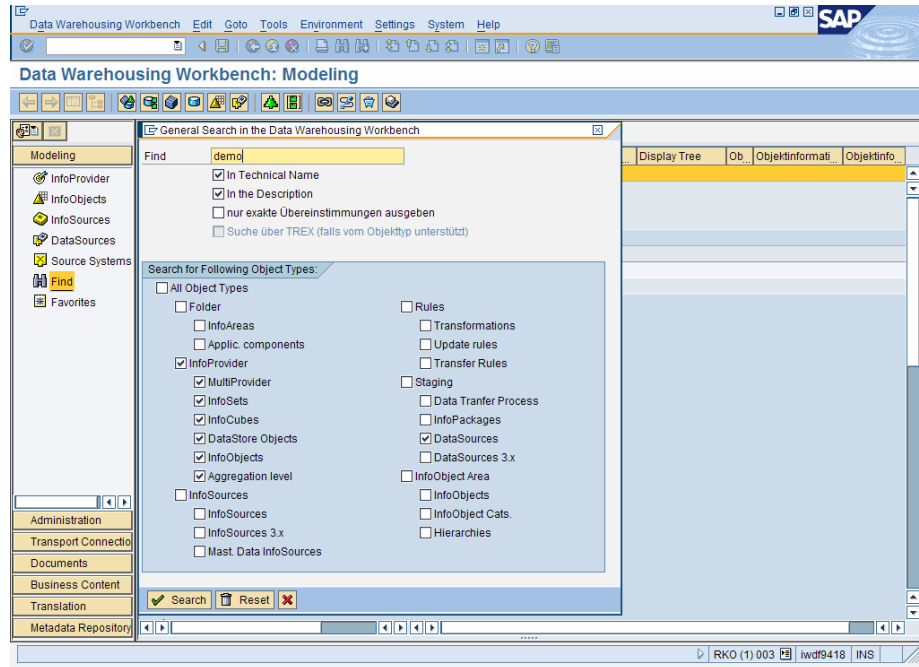
Tree Search

■ Quick search within the tree



Generic Search

- Also features global (i.e. source system independent) DataSource search



- No part of this publication may be reproduced or transmitted in any form or for any purpose without the express permission of SAP AG. The information contained herein may be changed without prior notice.
- Some software products marketed by SAP AG and its distributors contain proprietary software components of other software vendors.
- Microsoft, Windows, Outlook, and PowerPoint are registered trademarks of Microsoft Corporation.
- IBM, DB2, DB2 Universal Database, OS/2, Parallel Sysplex, MVS/ESA, AIX, S/390, AS/400, OS/390, OS/400, iSeries, pSeries, xSeries, zSeries, z/OS, AFP, Intelligent Miner, WebSphere, Netfinity, Tivoli, and Informix are trademarks or registered trademarks of IBM Corporation in the United States and/or other countries.
- Oracle is a registered trademark of Oracle Corporation.
- UNIX, X/Open, OSF/1, and Motif are registered trademarks of the Open Group.
- Citrix, ICA, Program Neighborhood, MetaFrame, WinFrame, VideoFrame, and MultiWin are trademarks or registered trademarks of Citrix Systems, Inc.
- HTML, XML, XHTML and W3C are trademarks or registered trademarks of W3C®, World Wide Web Consortium, Massachusetts Institute of Technology.
- Java is a registered trademark of Sun Microsystems, Inc.
- JavaScript is a registered trademark of Sun Microsystems, Inc., used under license for technology invented and implemented by Netscape.
- MaxDB is a trademark of MySQL AB, Sweden.
- SAP, R/3, mySAP, mySAP.com, xApps, xApp, SAP NetWeaver and other SAP products and services mentioned herein as well as their respective logos are trademarks or registered trademarks of SAP AG in Germany and in several other countries all over the world. All other product and service names mentioned are the trademarks of their respective companies. Data contained in this document serves informational purposes only. National product specifications may vary.

- The information in this document is proprietary to SAP. No part of this document may be reproduced, copied, or transmitted in any form or for any purpose without the express prior written permission of SAP AG.
- This document is a preliminary version and not subject to your license agreement or any other agreement with SAP. This document contains only intended strategies, developments, and functionalities of the SAP® product and is not intended to be binding upon SAP to any particular course of business, product strategy, and/or development. Please note that this document is subject to change and may be changed by SAP at any time without notice.
- SAP assumes no responsibility for errors or omissions in this document. SAP does not warrant the accuracy or completeness of the information, text, graphics, links, or other items contained within this material. This document is provided without a warranty of any kind, either express or implied, including but not limited to the implied warranties of merchantability, fitness for a particular purpose, or non-infringement.
- SAP shall have no liability for damages of any kind including without limitation direct, special, indirect, or consequential damages that may result from the use of these materials. This limitation shall not apply in cases of intent or gross negligence.
- The statutory liability for personal injury and defective products is not affected. SAP has no control over the information that you may access through the use of hot links contained in these materials and does not endorse your use of third-party Web pages nor provide any warranty whatsoever relating to third-party Web pages.