



**How-to Guide  
SAP NetWeaver '04**

# **How to... Push Data into BW from XI**

**Version 1.15 – December 2004**

**Applicable Releases:  
SAP NetWeaver '04  
(SAP BW 3.5, SAP XI 3.0)**

© Copyright 2004 SAP AG. All rights reserved.

No part of this publication may be reproduced or transmitted in any form or for any purpose without the express permission of SAP AG. The information contained herein may be changed without prior notice.

Some software products marketed by SAP AG and its distributors contain proprietary software components of other software vendors.

Microsoft, Windows, Outlook, and PowerPoint are registered trademarks of Microsoft Corporation.

IBM, DB2, DB2 Universal Database, OS/2, Parallel Sysplex, MVS/ESA, AIX, S/390, AS/400, OS/390, OS/400, iSeries, pSeries, xSeries, zSeries, z/OS, AFP, Intelligent Miner, WebSphere, Netfinity, Tivoli, and Informix are trademarks or registered trademarks of IBM Corporation in the United States and/or other countries.

Oracle is a registered trademark of Oracle Corporation.

UNIX, X/Open, OSF/1, and Motif are registered trademarks of the Open Group.

Citrix, ICA, Program Neighborhood, MetaFrame, WinFrame, VideoFrame, and MultiWin are trademarks or registered trademarks of Citrix Systems, Inc.

HTML, XML, XHTML and W3C are trademarks or registered trademarks of W3C<sup>®</sup>, World Wide Web Consortium, Massachusetts Institute of Technology.

Java is a registered trademark of Sun Microsystems, Inc.

JavaScript is a registered trademark of Sun Microsystems, Inc., used under license for technology invented and implemented by Netscape.

MaxDB is a trademark of MySQL AB, Sweden.

SAP, R/3, mySAP, mySAP.com, xApps, xApp, SAP NetWeaver, and other SAP products and services mentioned herein as well as their respective logos are trademarks or registered trademarks of SAP AG in Germany and in several other countries all over the world. All other product and service names mentioned are the trademarks of their respective companies. Data contained in this document serves informational purposes only. National product specifications may vary.

These materials are subject to change without notice. These materials are provided by SAP AG and its affiliated companies ("SAP Group") for informational purposes only, without representation or warranty of any kind, and SAP Group shall not be liable for errors or omissions with respect to the materials. The only warranties for SAP Group products and services are those that are set forth in the express warranty statements accompanying such products and services, if any. Nothing herein should be construed as constituting an additional warranty.

These materials are provided "as is" without a warranty of any kind, either express or implied, including but not limited to, the implied warranties of merchantability, fitness for a particular purpose, or non-infringement. SAP shall not be liable for damages of any kind including without limitation direct, special, indirect, or consequential damages that may result from the use of these materials.

SAP does not warrant the accuracy or completeness of the information, text, graphics, links or other items contained within these materials. SAP has no control over the information that you may access through the use of hot links contained in these materials and does not endorse your use of third party web pages nor provide any warranty whatsoever relating to third party web pages.

SAP NetWeaver "How-to" Guides are intended to simplify the product implementation. While specific product features and procedures typically are explained in a practical business context, it is not implied that those features and procedures are the only approach in solving a specific business problem using SAP NetWeaver. Should you wish to receive additional information, clarification or support, please refer to SAP Consulting.

# 1 Business Scenario

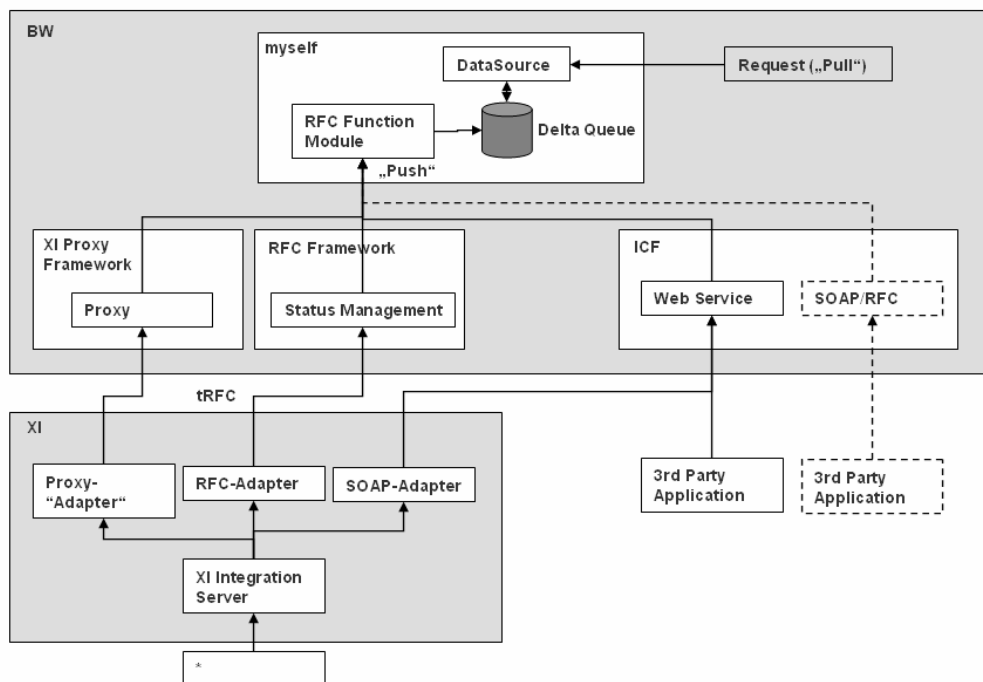
This document describes how to send data from XI to BW with full Quality of Service (Exactly Once In Order). The solution is based on BW 3.5 and XI 3.0 which are both part of SAP NetWeaver '04.

## 2 Introduction

Since the BW release 3.0B data can be transferred to the BW via “Push” into the BW Delta Queue. From there it is requested with the same mechanisms that are used for the extraction from R/3 source systems.

However, the Web Service and the generic SOAP/RFC Service do not support “Exactly Once” transfer of data as no transaction ID is handled in the framework. Therefore data might be transferred several times which is not valid for all delta options that can be used in BW.

The following picture shows different options of the data flow.



XI 3.0 provides a variety of ways to access data from different sources. There are adapters to connect files, databases, messaging systems, Web Services. With R/3 systems (3.1h and higher), IDoc and RFC can be used.

The standard communication channel for SAP systems is the ABAP Proxy which is available for Web AS 6.20 and higher.

The Proxy communication supports the full Quality of Service (“Exactly Once In Order”) between XI and BW which other adapters do not:

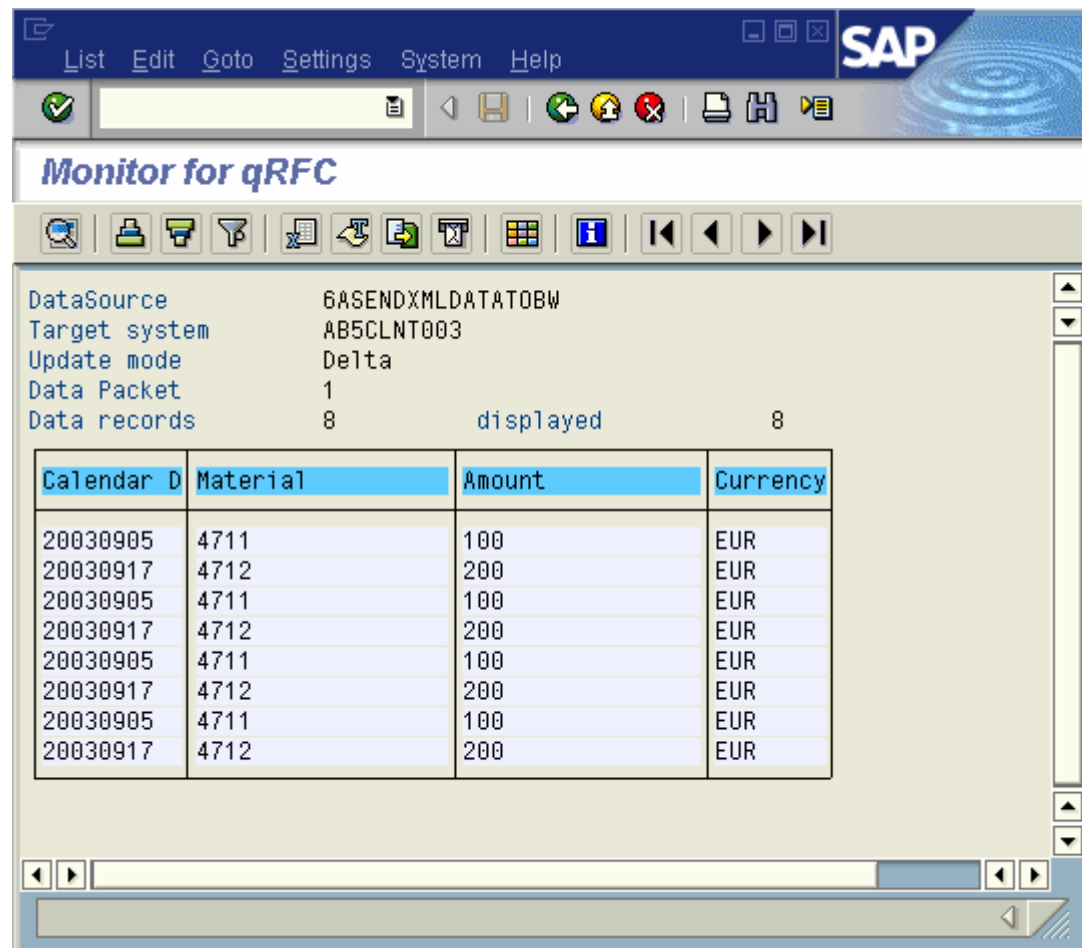
- The RFC-Adapter does not support “In Order” but only “Exactly Once” (so-called tRFC)
- The SOAP-Adapter supports “In Order”, i.e. the order of the messages of the sender is kept during the processing. However “Exactly Once” cannot be implemented in this scenario in conjunction with the receiver (see above).

Hence, SAP recommends to use the **ABAP Proxy** communication. Only the ABAP Proxy implementation is described in this paper.

Further information and the prerequisites to enable the full Quality of Service are described in note 717162.

### 3 The Result

The XML data is stored in the delta queue of the BW myself system (transaction RSA7 in the BW) and, consequently, integrated into the BW staging process.



The screenshot shows the SAP Monitor for qRFC interface. The top menu bar includes List, Edit, Goto, Settings, System, and Help. Below the menu is a toolbar with various icons. The main area displays the following information:

DataSource: 6ASENDXMLDATATOBW  
Target system: AB5CLNT003  
Update mode: Delta  
Data Packet: 1  
Data records: 8 displayed 8

Calendar D	Material	Amount	Currency
20030905	4711	100	EUR
20030917	4712	200	EUR
20030905	4711	100	EUR
20030917	4712	200	EUR
20030905	4711	100	EUR
20030917	4712	200	EUR
20030905	4711	100	EUR
20030917	4712	200	EUR

## 4 The Step By Step Solution

### 4.1 Remarks and Prerequisites in the BW system

1. Remarks

The proposed solution is based on the SOAP DataSource which is a feature since BW 30B. The usage is described in a different How-To Paper “Send XML Data to BW” which you find under <http://service.sap.com/~sapidb/011000358700011142902001E/HOWTOSENDXMLDATATOBW.DOC>.
2. Prerequisites

The BW is integrated to the XI landscape.

If this is not yet the case, follow the configuration guide of XI which you find here: SAP Service Marketplace ( <http://service.sap.com/instguides> )

Hint: As only the proxy communication is used, there is no configuration of IDOC or RFC communication necessary.
3. Perform the steps 1 to 20 (“...create a new InfoPackage ...”) from the BW 3.0 How-To Guide “Send XML Data to BW”

Results:

1: A DataSource in the myself system has been generated

Name: 6ASENDXMLDATATOBW (in general: 6A<File-DataSource>)

2: You find an RFC-enabled function module which will be used to perform the inbound processing of data like explained in the following steps.

Name: /BI0/QI6ASENDXMLDATATOBW\_RFC (in general: /BI0/QI<datasource>\_RFC)

## 4.2 Tasks in the Integration Builder (XI) and BW Proxy Framework

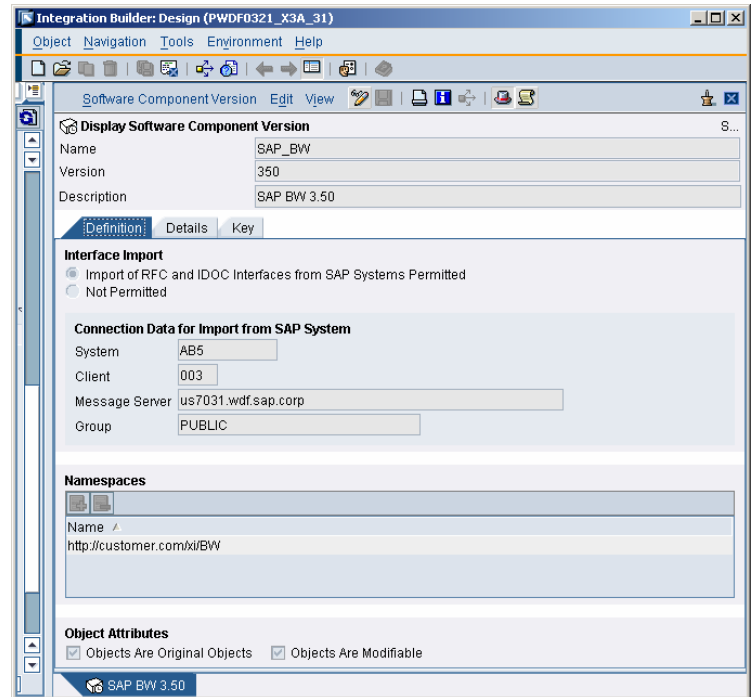
### Repository and Proxy Framework

4. Open the Repository (Design) of the XI Integration Builder. You may start the application by executing transaction SXMB\_IFR in the BW system. (Further information can be found in the XI documentation -> Design and Configuration Time -> Design).)

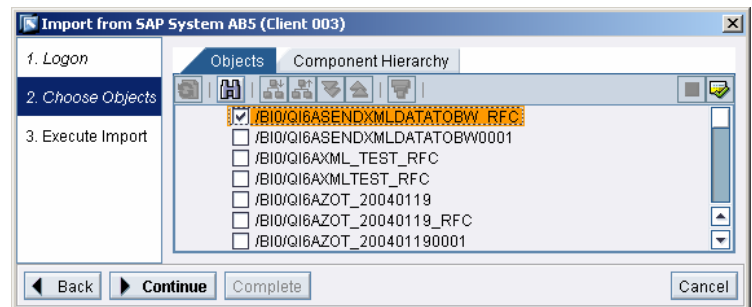
Choose your Software Component in the tree and open it with double-click: here we use: XITestComponent

Enter the system data of the BW system that you want to connect.

Note: If any problems occur when executing the Integration Builder check the client software installation (follow note 580351)



5. Choose "Import RFC/IDOC" in the context menu of "Imported Objects" and enter your user data to logon to the BW system. Select the function module /BI0/QI6ASENDXMLDATATOBW\_RFC Press "Continue"  
Press "Start"

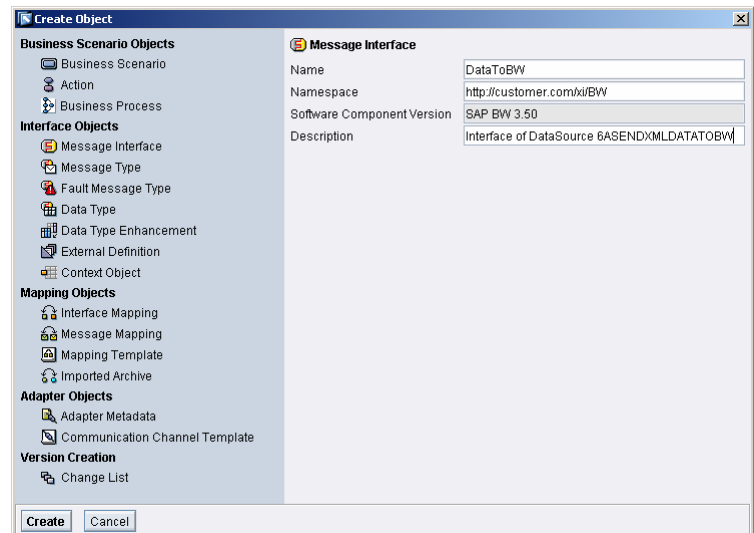


6. Select your namespace, here:  
“http://customer.com/xi/BW” is used

Choose “Interface Objects” and then  
“Message Interface”

Create a Message Interface there by  
choosing “New” from the context menu

Press “Create”

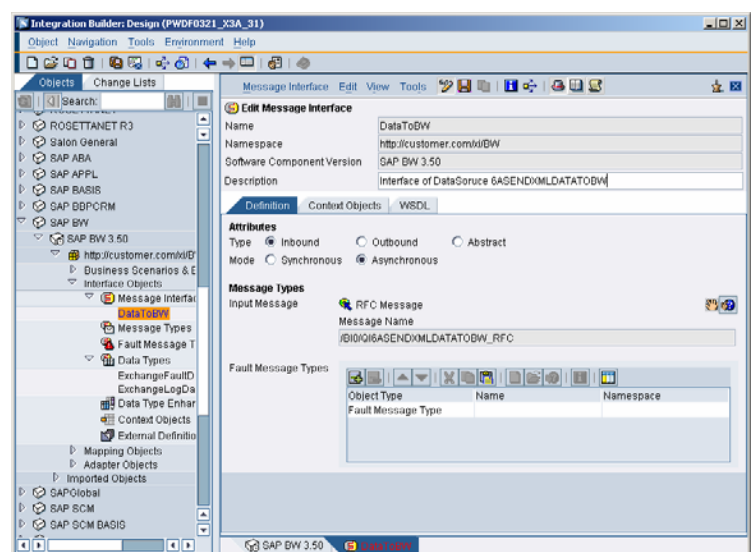


7. Choose the settings like this:

Direction: Inbound

Mode: Asynchronous

Select the imported RFC Message and by  
executing the value help  
/BI0/QI6ASENDXMLDATATOBW\_RFC for  
Input Message Name

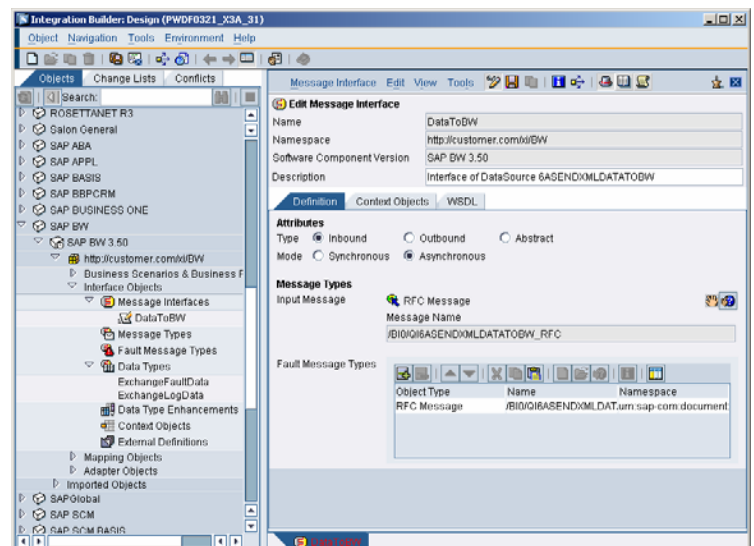


8. Select the Fault Message:

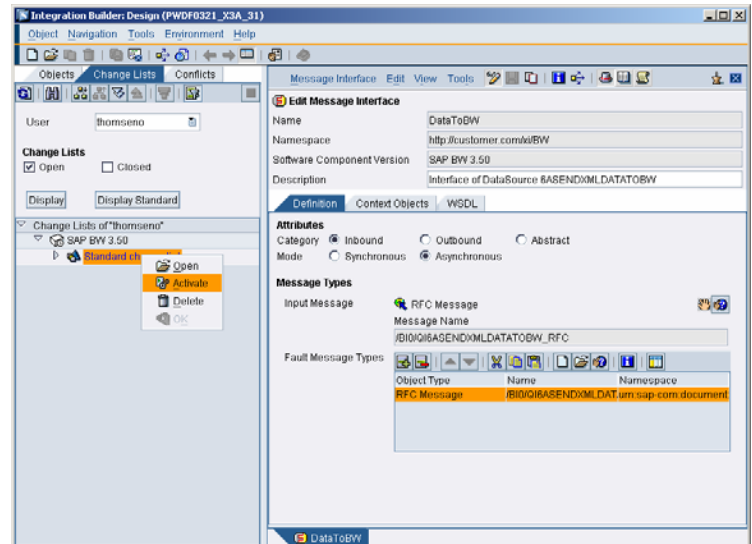
Object Type: “RFC Message”

Choose the Name via value help, here:  
“/BI0/QI6ASENDXMLDATATOBW\_RFC.E  
xception” in the namespace “urn:sap-  
com:document:sap:rfc:functions”

Save the Message Interface.



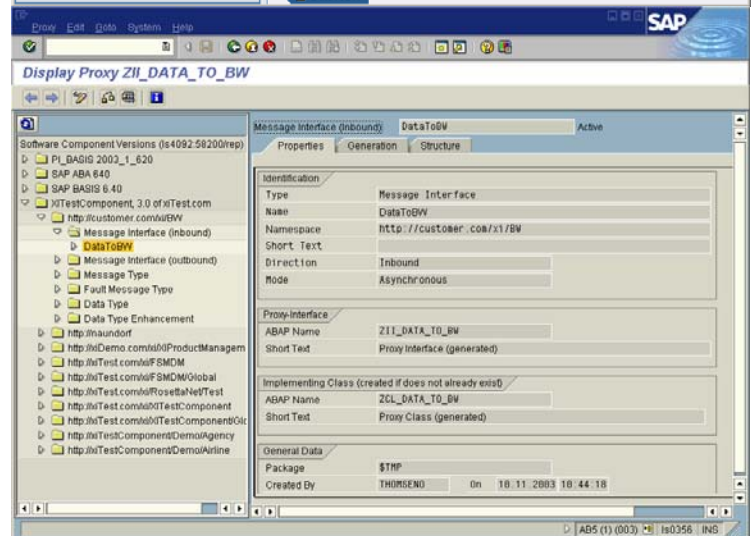
9. Activate the Change List which you find on the Tab “Changelist”



10. Create the proxy in the BW system:  
Start transaction SPROXY and Refresh the tree  
Double-click on the Message Interface “DataToBW” in your Software Component in your namespace (here: “http://customer.com/xi/BW”)

Choose a package (e.g. \$tmp)  
Choose a prefix (we use “Z” here)

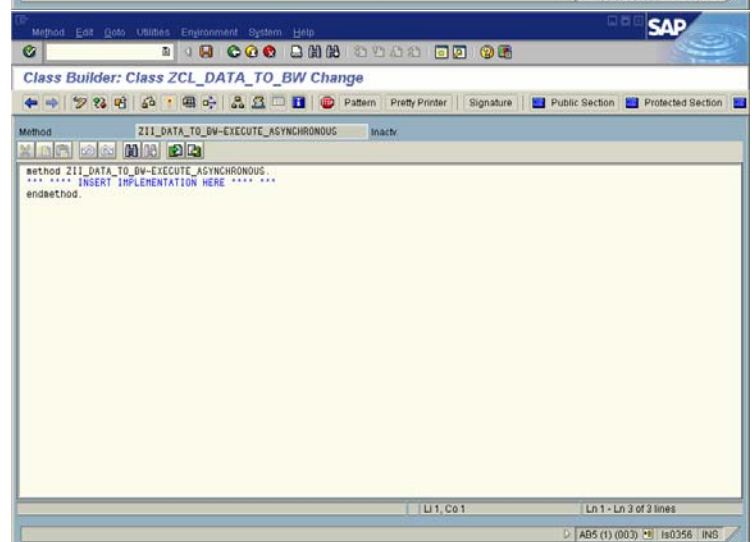
Activate the Proxy



11. Navigate to the implementing class ZCL\_DATA\_TO\_BW by double clicking

Navigate to the method “EXECUTE\_ASYNCHRONOUS” by double-clicking.

Choose the change mode.





12. Insert the implementation of the method based on this sample coding and change the highlighted elements.  
You find a sample in the ZIP-file “coding\_01.zip” attached to note 717162.

`l_t_data`: tables parameter for data transfer to the function module (can be looked up the type in the tables parameter of the function module)  
`l_s_data`: structure with the same structure as `l_t_data`.  
Enter the name of the function module to the one you use (here:  
`‘/BI0/QI6ASENDXMLDATATOBW_RFC’`  
)  
Enter the literal for the parameter “datasource” which is here:  
`‘6ASENDXMLDATATOBW’` – Doing so value of the element “datasource” may be omitted in the payload of the XML data (Note: the element still has to occur in the payload!).  
Enter the name of the exception class which can be found in the signature of the method (Press the button “Hide/show signature” to make the signature visible).  
Here it is  
`zcx__bi0__qi6asendxmladatobw`.

13. Save and activate the method and all class and interface components

14. Result

```
METHOD zii_data_to_bw~execute_asynchronous.
  DATA: l_text TYPE string,
         l_s_data TYPE zoxab50111,
         l_t_data TYPE TABLE OF zoxab50111.
  FIELD-SYMBOLS <l_line> LIKE LINE OF input-data-
  item.

  LOOP AT input-data-item ASSIGNING <l_line>.
    MOVE-CORRESPONDING <l_line> TO l_s_data.
    APPEND l_s_data TO l_t_data.
  ENLOOP.

  CALL FUNCTION '/BI0/QI6ASENDXMLDATATOBW_RFC'
    EXPORTING
      datasource = '6ASENDXMLDATATOBW'
    TABLES
      data       = l_t_data
    EXCEPTIONS
      OTHERS     = 1.
  IF sy-subrc NE 0.
    MESSAGE ID sy-msgid TYPE sy-msgty NUMBER sy-
    msgno WITH sy-msgv1 sy-msgv2 sy-msgv3 sy-msgv4 INTO
    l_text.
    RAISE EXCEPTION TYPE
    zcx__bi0__qi6asendxmladatobw
      EXPORTING text = l_text.
  ENDIF.
ENDMETHOD.
```

The BW is now ready to receive data from the Integration Server via the Proxy Framework and the implemented Proxy. Data which is running through XI may now be transferred to the BW system according to routings and mappings that still have to be created.

## Verification Szenario

### XI Configuration

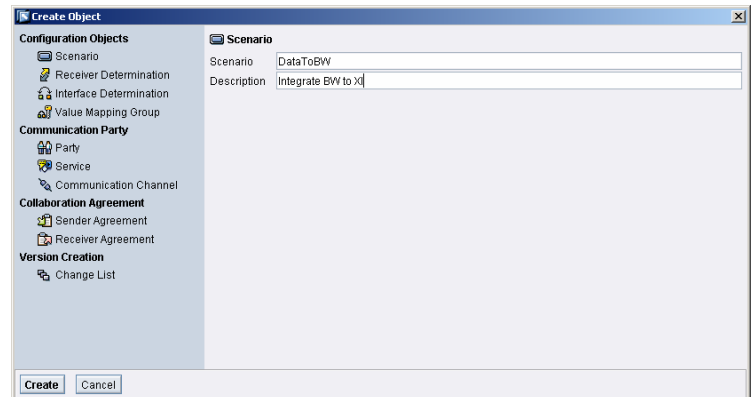
15. Open the Directory (Configuration):  
Execute transaction SXMB\_IFR (in the BW or XI system) and select “Directory” under SAP Integration Builder

16. Select the tab “Scenarios” and choose “New” from the context menu

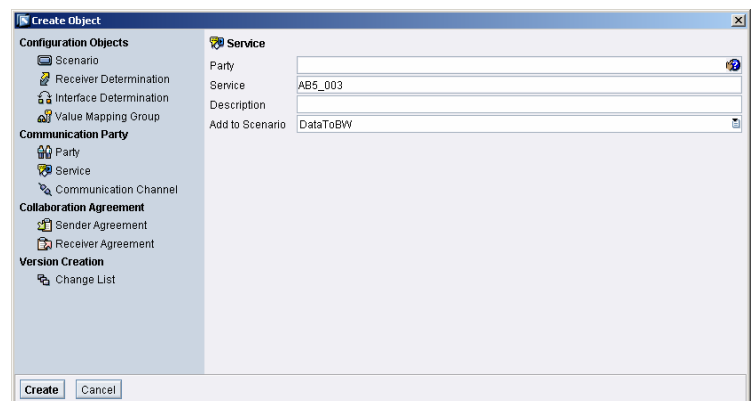
Enter “DataToBW” and a description

Press Create

Save the Scenario

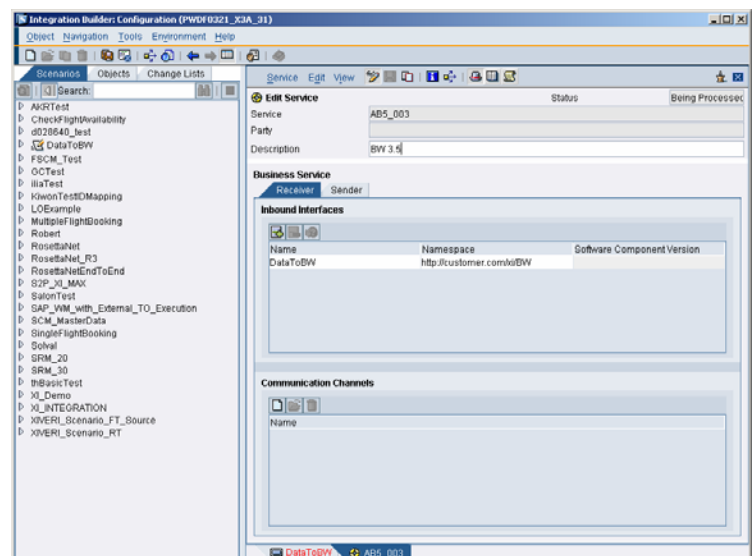


17. Press “Create New Object” under Collaboration Profile Objects (tab Scenario Objects)  
Choose Service and enter the name of your BW system (Business System which is maintained in the System Landscape Directory)  
Here the BW system is: AB5\_003  
Press “Create”



18. Add the inbound interface “DataToBW” in the namespace you use (here: “http://customer.com/xi/BW”) on the tab Receiver

Press Save



19. Create a communication channel for the BW system  
Press “Create New Object” which you find under “Communication Channels” of the Service

Enter the name “DataToBW” and a description

Press “Create”

20. Maintain the communication data (**Further information and explanations can be found in the XI documentation.**):

Enter (or choose respectively)

Adapter type: XI

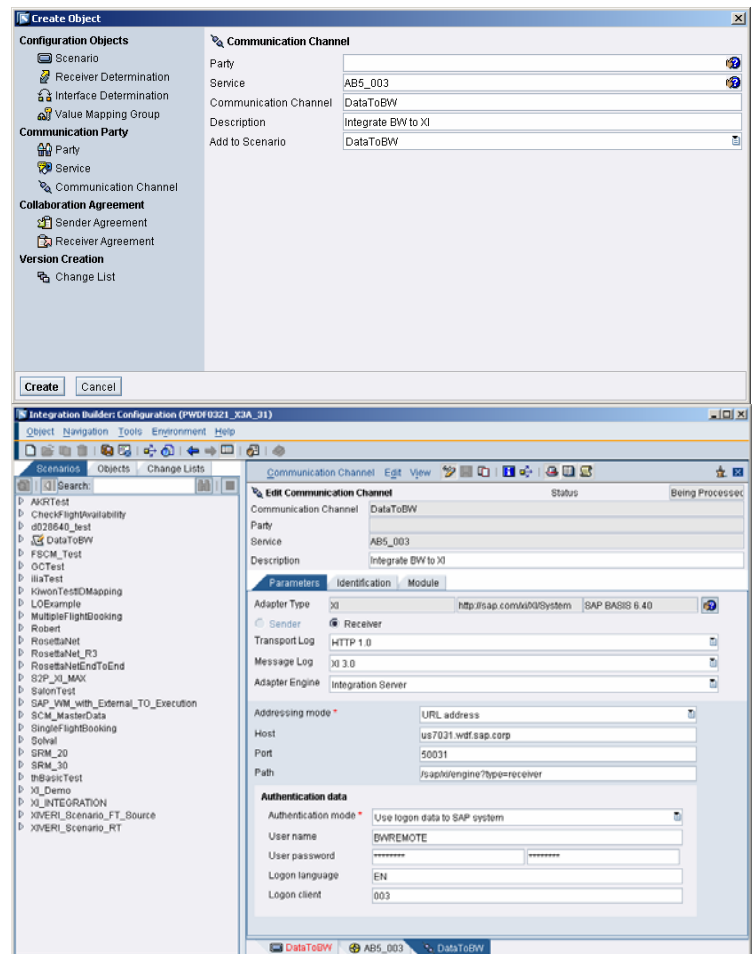
Message Log: XI 3.0

Addressing Mode: URL address

Host and Port (or Service Number resp.) of the BW system which can be obtained using transaction SMICM, the Path which is usually “/sap/xi/engine?type=receiver”

Add the Authentication data

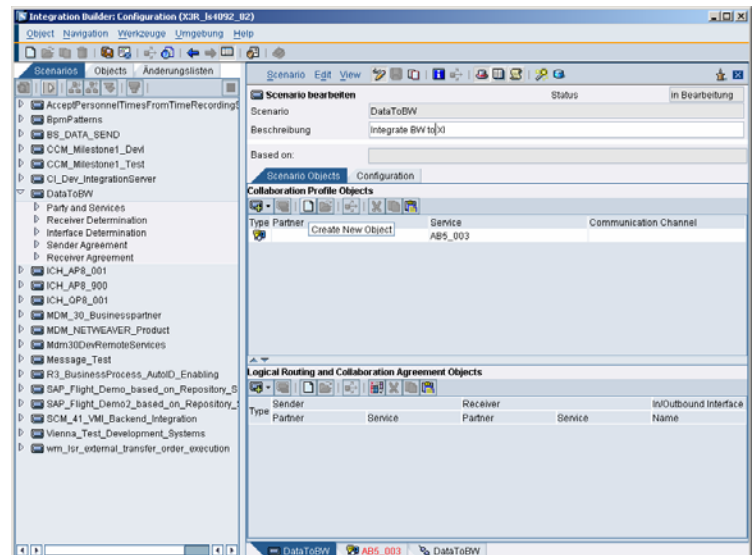
Save the Communication Channel



21. Create a “virtual” sender for which is used later in the verification

Press “Create New Object” on the Scenario object under Collaboration Profile Objects (tab Scenario Objects)

Select: “Service”

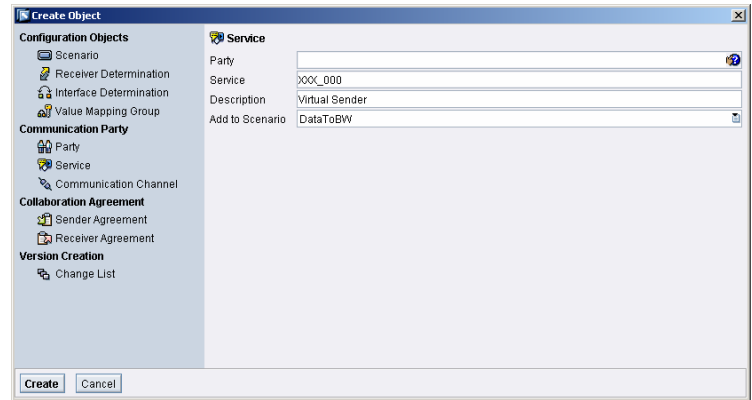


22. Specify the Service name and add a description

Here: “XXX\_000”

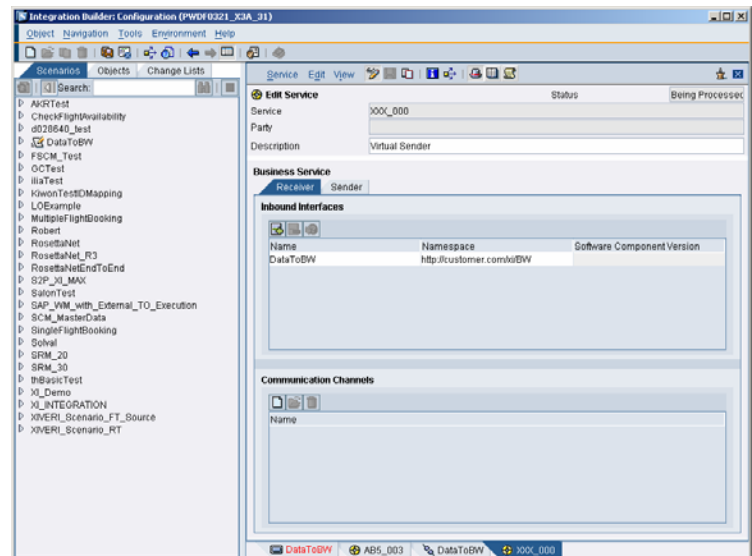
Press “Create”

Save the service



23. Add the outbound interface “DataToBW” in your namespace (here: “http://customer.com/xi/BW”) on the tab “Sender”

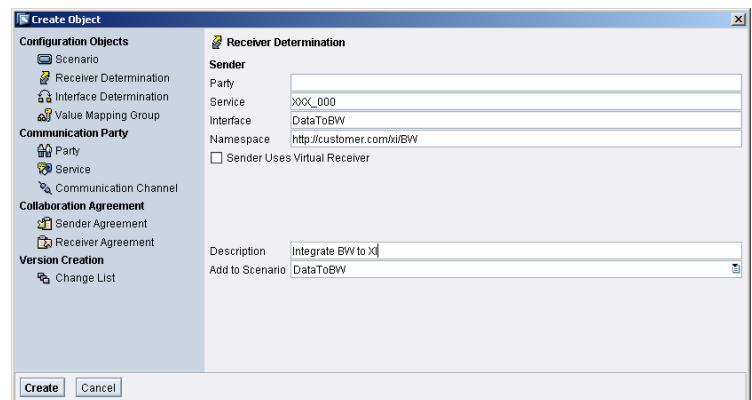
There is no “Communication Channel” required



24. Create the “Receiver Determination” from the Scenario Tab (under “Logical Routing and Collaboration Agreement Objects”)

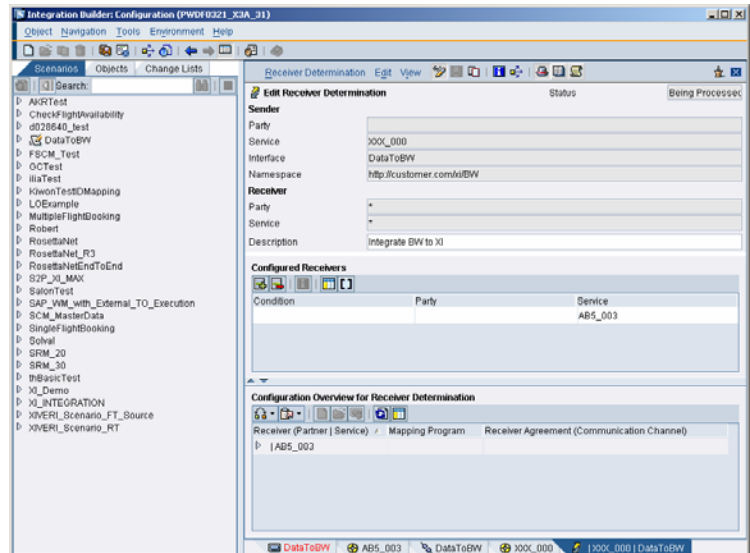
Enter the Sender, Interface and Namespace and add a description

Press “Create”



25. Enter the BW system under “Configured Receivers”, here AB5\_003

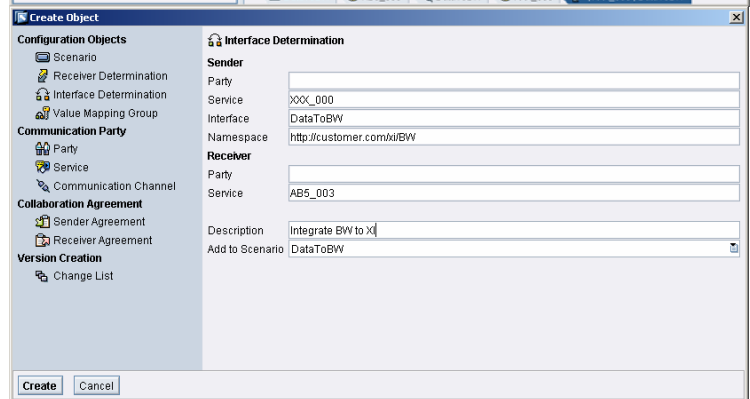
Press “Save”



26. Create an “Interface Determination” from the Scenario Tab

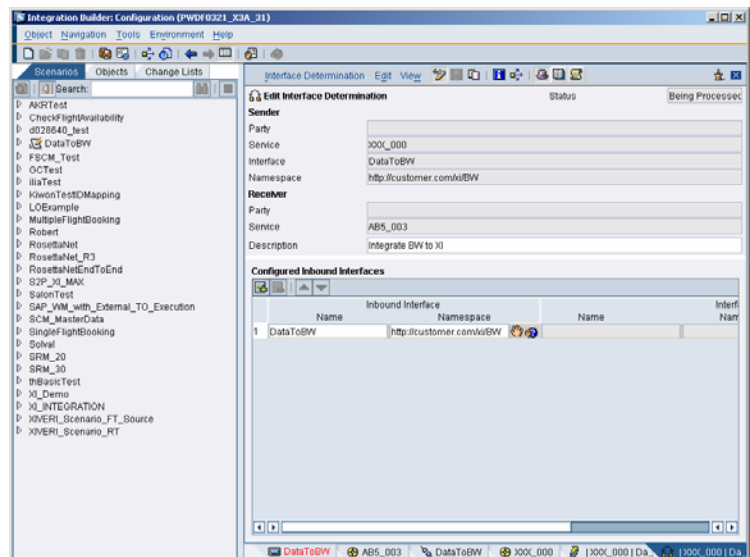
Enter the sender service, the interface the namespace and the receiver system

Press “Create” and save



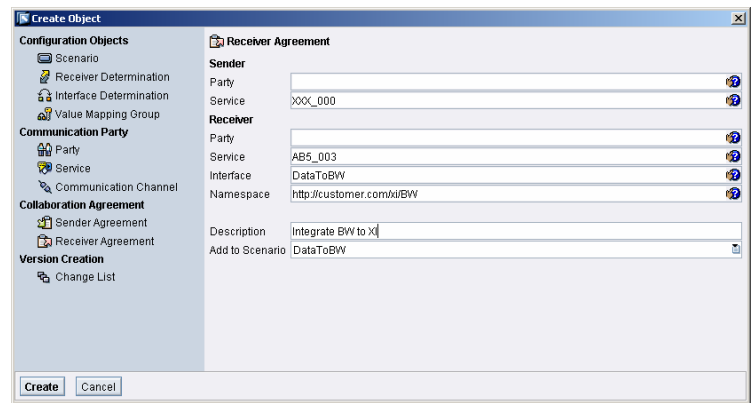
27. Enter the Interface name under “Configured Inbound Interfaces”

Press Save



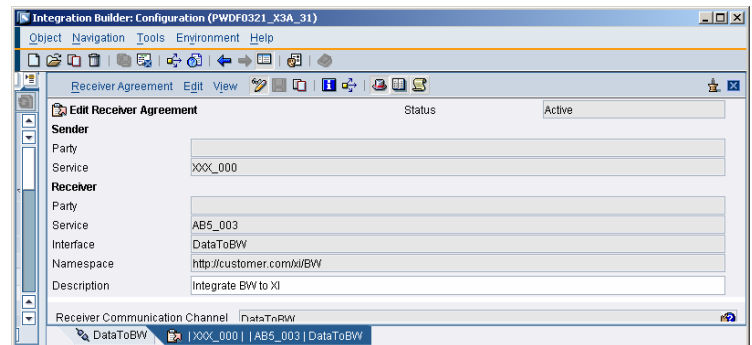
28. Create a “Receiver Agreement” from the Scenario Tab

Enter the Sender Service, the Receiver Service, the interface, the namespace and add a description



29. Choose the Receiver Communication Channel, here: “DataToBW”

Save the Receiver Agreement



30. Activate your Change list

Hint: You may check the Scenario element on the Scenario Tab by executing “Check Scenario” in the menu “Scenario”.

Result: Messages can now be sent from the system XXX\_000 via the XI system to the BW system

## Runtime: Send Data and transfer it to the BW

31. In order to verify the processing of the messages we will use the native http adapter of the integration server and send an XML file to the integration server. (It is the fastest and easiest way to verify the load with the http adapter.)

32. Activate the plain http adapter (/sap/xi/adapter\_plain) on your XI Integration Server in transaction SICF if not yet active

33. Save the following source code of a verification program to your PC (e.g. to the file name sender.htm). You find a sample in the ZIP-file “coding\_01.zip” attached to note 717162.

```
<html>
<head>
<title>Send XML Data to BW System</title>
<script language="javascript">
<!--

function SendData() {

var mypath = document.myform.filename.value;
var myescns = escape(document.myform.mynamespace.value);
```

Remark:

You may also use a different client written in Java or VBA if available.

**Note:** This coding is for demonstration purposes only. It is not meant to be a delivered SAP product. Therefore SAP cannot give any OSS support concerning problems that might occur when using it.

```
var mycall = 'http://'
+ document.myform.myhost.value + ':'
+ document.myform.myport.value +
'/sap/xi/adapter_plain?bs='
+ document.myform.mysystem.value + '&namespace='
+ myescns + '&interface='
+ document.myform.myinterface.value + '&qos='
+ document.myform.myqos.value;

var xmlstream = new ActiveXObject("ADODB.Stream");
xmlstream.Mode = 3; // 1=read 3=read/write
xmlstream.Open();
xmlstream.Type = 1; // 1=adTypeBinary 2=adTypeText
xmlstream.LoadFromFile(mypath);
var xmlhttp = new ActiveXObject("Microsoft.XMLHTTP");
xmlhttp.Open("POST",mycall,false);
xmlhttp.setRequestHeader("Content-
Length",xmlstream.Size);
xmlhttp.setRequestHeader("Content-Type","text/xml");
xmlhttp.send(xmlstream.Read(xmlstream.Size));
XICall.innerText = mycall;
XIAnswer.innerHTML = xmlhttp.responseText;
}

//-->
</script>
</head>

<body>
<form name="myform">
<p>Path to file: </p>
<input type="file" name="filename" size=50 maxlength=80
value="c:\temp\demo.xml">
<p>XI adapter parameters: </p>
<table border=0>
<tr><td>hostname:</td><td>
<input type="text" name="myhost" size=50 maxlength=100
value="PWDF0321.wdf.sap.corp"><br/></td></tr>
<tr><td>port:</td><td>
<input type="text" name="myport" size=50 maxlength=100
value="50031"><br/></td></tr>
<tr><td>own business system:</td><td>
<input type="text" name="mysystem" size=50 maxlength=100
value="XXX_000"><br/></td></tr>
<tr><td>namespace:</td><td>
<input type="text" name="mynamespace" size=50
maxlength=100
value="http://customer.com/xi/BW"><br/></td></tr>
<tr><td>interface:</td><td>
<input type="text" name="myinterface" size=50
maxlength=100
value="DataToBW"><br/></td></tr>
<tr><td>quality of service (E0/BE):</td><td>
<input type="text" name="myqos" size=50 maxlength=10
value="E0"><br/></td></tr></table>
<input type="button" value="Send Records" onclick="return
SendData()">
<p>XI call:</p>
<div id=XICall></div>
<p>Answer:</p>
<div id=XIAnswer></div>
</form>
</body>
</html>
```

34. Save the following xml data to a file on your PC (e.g. to the filename sample.xml).  
You find a sample in the ZIP-file “coding\_01.zip” attached to note 717162.

Change the highlighted elements to the actual names:  
The interface name of the Sender Interface has to be edited in the start and end tag, here “DataToBW” is used.  
The namespace (after “ns1:”) has to be edited to the one you use. (here “http://customer.com/xi/BW” ist used)  
The mandatory element “DATASOURCE” can be left empty.

Note: The elements within the “item” node must correspond to the field structure of your DataSource.

35. Open the file Sender.htm in an Internet Explorer 5.5 or higher (The ActiveX Objects used in the code will probably not work in different or older web browsers).

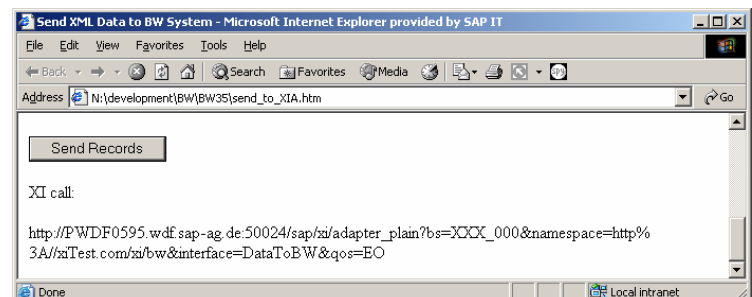
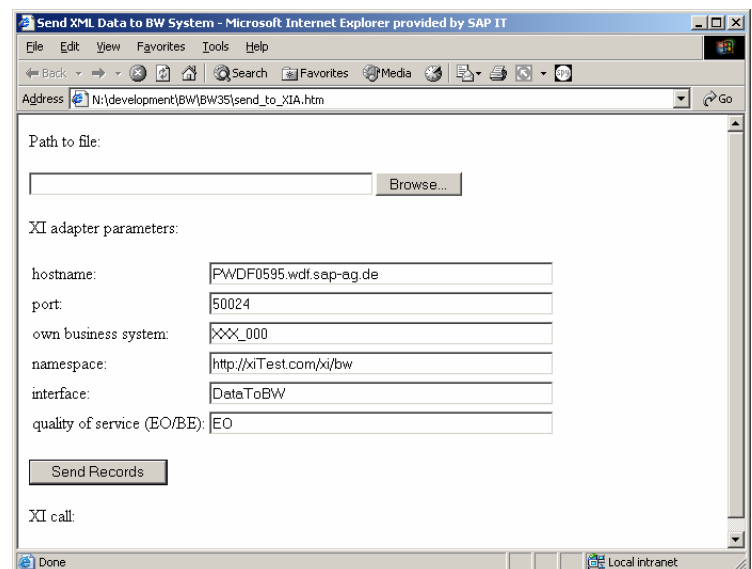
Enter  
the server name of your Integration Server,  
the port of the http services,  
the name of the business system maintained above,  
the namespace you are working in,  
the interface name “DataToBW”  
the quality of service “EO” (for asynchronous processing)

The XI documentation (Runtime -> Adapters -> Plain http adapter) provides more detailed information about the adapter.

36. Browse to your XML file (e.g. “sample.xml”) containing the demo records  
Send the records by pushing the “Send Records” button.

You find the call to the XI plain http adapter below the button.

```
<?xml version="1.0" encoding="utf-8"?>
<ns1:DataToBW xmlns:ns1="http://customer.com/xi/BW"
xmlns:xsi="http://www.w3.org/2001/XMLSchema-instance">
<DATA>
    <item>
        <CALDAY>20030905</CALDAY>
        <MATERIAL>4711</MATERIAL>
        <AMOUNT>100</AMOUNT>
        <CURRENCY>EUR</CURRENCY>
    </item>
    <item>
        <CALDAY>20030917</CALDAY>
        <MATERIAL>4712</MATERIAL>
        <AMOUNT>200</AMOUNT>
        <CURRENCY>EUR</CURRENCY>
    </item>
</DATA>
<DATASOURCE></DATASOURCE>
</ns1:DataToBW>
```

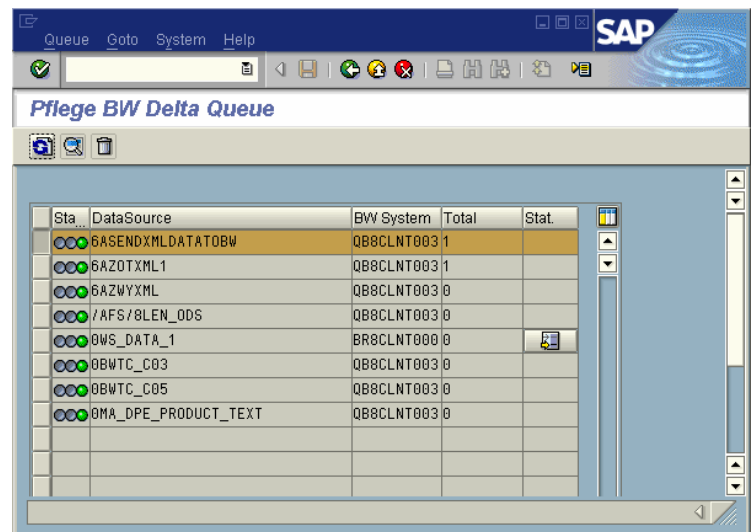




## Check result (error search)

37. Open the transaction RSA7 in the BW system.  
Use “Display Data Entries” to check the data has been transferred correctly.

The data can now be loaded with the standard BW staging process.



Sta...	DataSource	BW System	Total	Stat.
	6ASENDXMLDATAT0BW	QB8CLNT003	1	1
	6AZ0TXML1	QB8CLNT003	1	
	6AZVYXML	QB8CLNT003	0	
	/AFS/8LEN_ODS	QB8CLNT003	0	
	QWS_DATA_1	BR8CLNT000	0	
	QBWTC_C03	QB8CLNT003	0	
	QBWTC_C05	QB8CLNT003	0	
	QMA_DPE_PRODUCT_TEXT	QB8CLNT003	0	

38. Error Search:  
If the data does not occur in the delta queue you may examine the message flow in the transaction SXMB\_MONI on the XI system and on the BW system.  
Further details in the XI documentation under “Runtime”

## 5 Comments

- In general it can be assumed that data is sent from a different SAP or JAVA system in a productive scenario. In this case the mapping (design) and the configuration part in XI has to be implemented in a different way: messages that are sent from a sender to a receiver would be duplicated in a “message split”, converted to a flat structure and sent to the BW system.
- The proposed method of loading data from XML files could be enhanced for scenarios where files of different kinds (based on different XML Schema Definitions) are transferred to a BW system using an interface mapping. However, it is in any case mandatory to transform it to a format which corresponds to the interface of the generated RFC function module. This always contains a “tables parameter” with flat structure (no deep parameters possible).
- With the latest delivered Internet Explorer Patches the ActiveX functionality “ADOBD.Stream” has been disabled. Therefore the runtime cannot be used like described above. It is possible to enable the “ADODB.Stream” object by changing the registry entry like it is explained in the Microsoft Knowledge Base Article 870669 (Link: <http://support.microsoft.com/default.aspx?scid=kb;en-us;870669>). Please make sure that this is conform to your company’s security policy. Otherwise a different method for send the XML message has to be used.

## 6 Summary

This instruction is based on the How-to “...Send XML Data to BW” which enables a BW system to receive data records via the generic SOAP/RFC Service. There the XML DataSource is used to read data from an XML file and send it to a BW.

After performing the first 20 steps of the How To “...Send XML Data to BW” there is a generated DataSource within the BW source system (“MySelf” system) which is intended for uploading delta records, and has an RFC function module for supplying the delta queue.

In this paper it is shown how to use the function module to enable a communication via a Proxy from XI to BW for inbound messaging. Proxy communication is used as this supports the full Quality of Service (Exactly Once in Order) between XI and BW for the processed data messages.

In the Design Area of the Integration Builder a message interface is defined which is then used to create the Proxy in the BW system. The a template for the implementation has to be copied and changed according to the actual Function Module which is used.

After that in the Configuration Area of the Integration Builder the system specific settings are done. As this paper should be used separated from other scenarios a Virtual System is defined in the Configuration.

For verification purpose an XML file is used to create a message which is sent to the Integration Service through the HTTP-Adapter by means of the Internet Explorer. The data occurs in the Delta Queue of the BW.

**[www.sdn.sap.com/irj/sdn/howtoguides](http://www.sdn.sap.com/irj/sdn/howtoguides)**